



Other



# SPECIFICATIONS

Sec. : Other  
Date : Aug 2016



# SPECIFICATIONS

# Vertical Blinds - Product Overview



## Product Overview



Our robust vertical blind system features a rust free extruded aluminium powder coated head rail. The head rail is fixed in place using a spring steel nickel plated bracket. A geared control unit and 2-wheeled traveller mechanism supports a specially designed four prong tilt shaft to ensure precision closing. The travellers are UV resistant and incorporate a self-aligning mechanism with limit stops to prevent over-rotation. These 2-wheeled travellers within the aluminium head rail supports fabric louvres of 89mm width. Louvres can be traversed to either or both sides as required and can also be rotated through 180 degrees allowing you to fully control both privacy and the amount of light coming through the window. End caps at either end of the track enclose all working parts. Fabric slats are sewn top and bottom using a 100% UV resistant highly transparent nylon monofilament sewing thread (.011 DIA).

Travellers, controllers, end caps, cords, wands and weights are fully colour coordinated. The head rail comes in various colours. All plastic parts such as travellers, controllers, end caps, slat hangers and control weights are made from prime grade (POM) Polyoxymethylene and the composition of the bottom weights is Calcium Carbonate.

## Applications

Being very versatile, vertical blinds offer you complete or partial privacy and caters for either domestic or commercial applications. In a domestic application they are used on the traditional ranch-slider, patio doors, conservatories, living rooms, bedrooms and bay windows. For commercial applications, we carry a wide variety of fabrics suitable for schools, hospitals, restaurants, hotels, to apartments and office buildings and are also ideal for dressing large panels of glass in office complexes. Verticals have the additional benefit of being the ideal solution for irregular windows where a raked blind is required.

## Fabrics

A comprehensive range of colours and styles are available to suit any specification including block-out, translucent and sunscreen.



## Head Rail

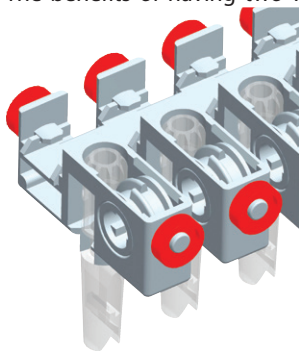
The elegant low profile curved side head rail design measuring just 45mm x 25mm deep gives a compact impression. The extrusion is rust free extruded aluminium powder coated available in various colours.

## Fixing

The ceiling side of the track has a specially designed channel to allow for perfect fixing using the snap-in spring steel nickel plated bracket.

## The 2-Wheeled Carrier

The benefits of having two wheels over traditional Carriers with no wheels are significant. It allows the operation to be ultra-smooth and very quiet. Apart from the quietness, the smooth operation excels particularly on large windows as there is very little effort required when pulling the louvres to one side. The other significant benefit is that the 2-wheeled travellers are of reduced width allowing for minimal stacking of the blind when in the open position.



## Operation: there are two options available

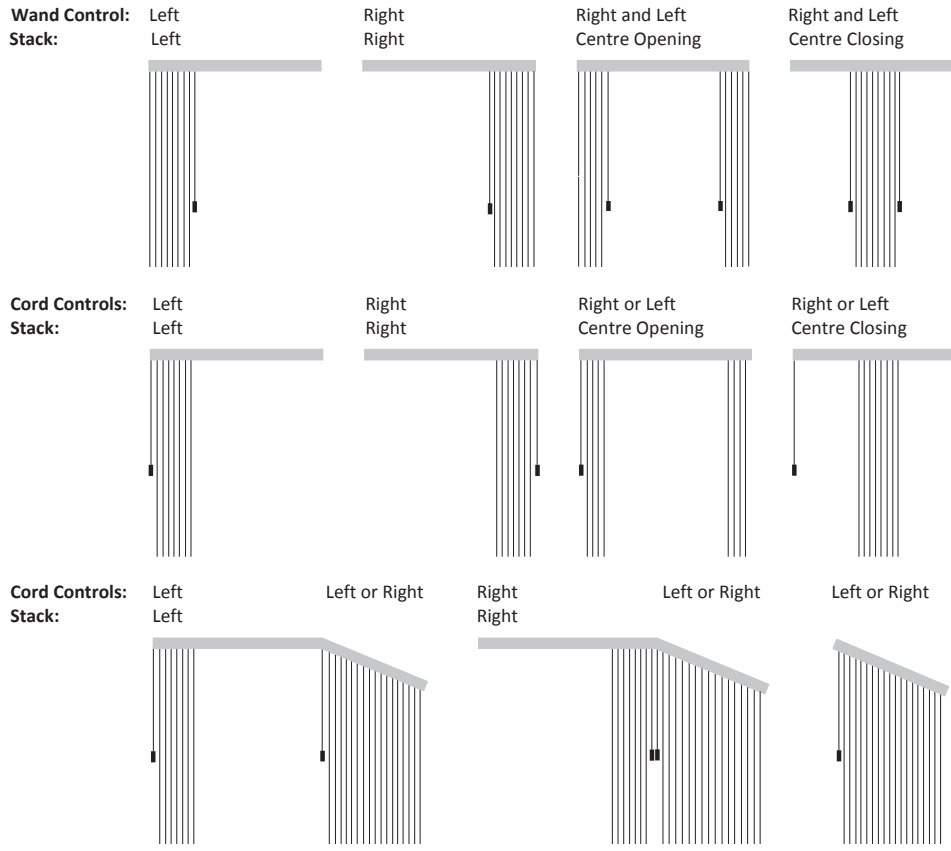
**1. Wand control:** The aluminium wand with a PVC grip handle is attached to the leading slat carrier. The wand can be twisted to adjust the angle of the louvres to the desired position as well as used to traverse the blind to one side. The wand control is our recommended option due to its child safety feature (no cords) and simple function. Wand colours are available in White, Grey or Black. Louvre size is 89mm. Maximum size: Width 3.2m, Drop 3.5m

**2. Cord control:** A polyester cord pull to traverse the slats and a beaded chain for rotation of louvres. Both controls can be positioned either on the left or right hand side of blind or at opposite ends. The beaded rotation chain has a stretch resistant nylon core for strength. Various stack options are available. Colours available: white, grey, black. Louvre size is 89mm. Maximum size: Width 4.0m, Drop 3.5m

SPECIFICATIONS

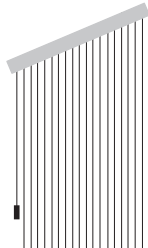
Sec. : Vertical  
Date : Oct 2016

## Controls and Stack Options



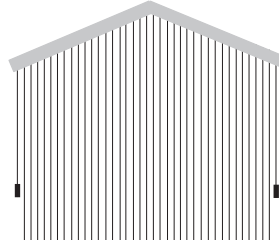
## Specialty Options

**Raking Head Window**



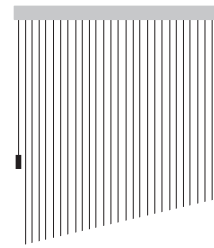
Inclination angle between 0° up to a maximum of 17° will not require a Trapezium Hook. Rotation of louvres 180 degree. Stacking left or right towards the highest side.

**Double Raking Head Window**

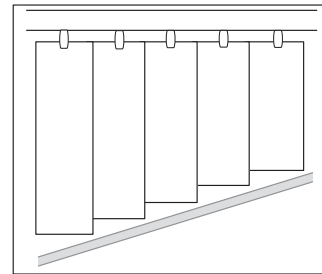
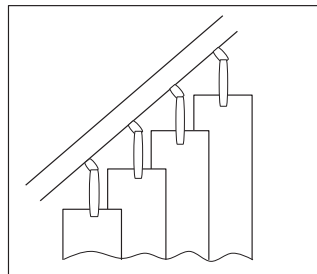
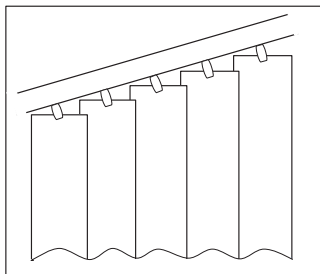


Inclination angle between 18° up to a maximum of 45° will require a Trapezium Hook. Rotation of louvres 180 degree. Stacking can be achieved up to 25°.

**Raking Sill**



The greater sill inclination angle the greater stair impression. Stacking left or right towards the highest side.



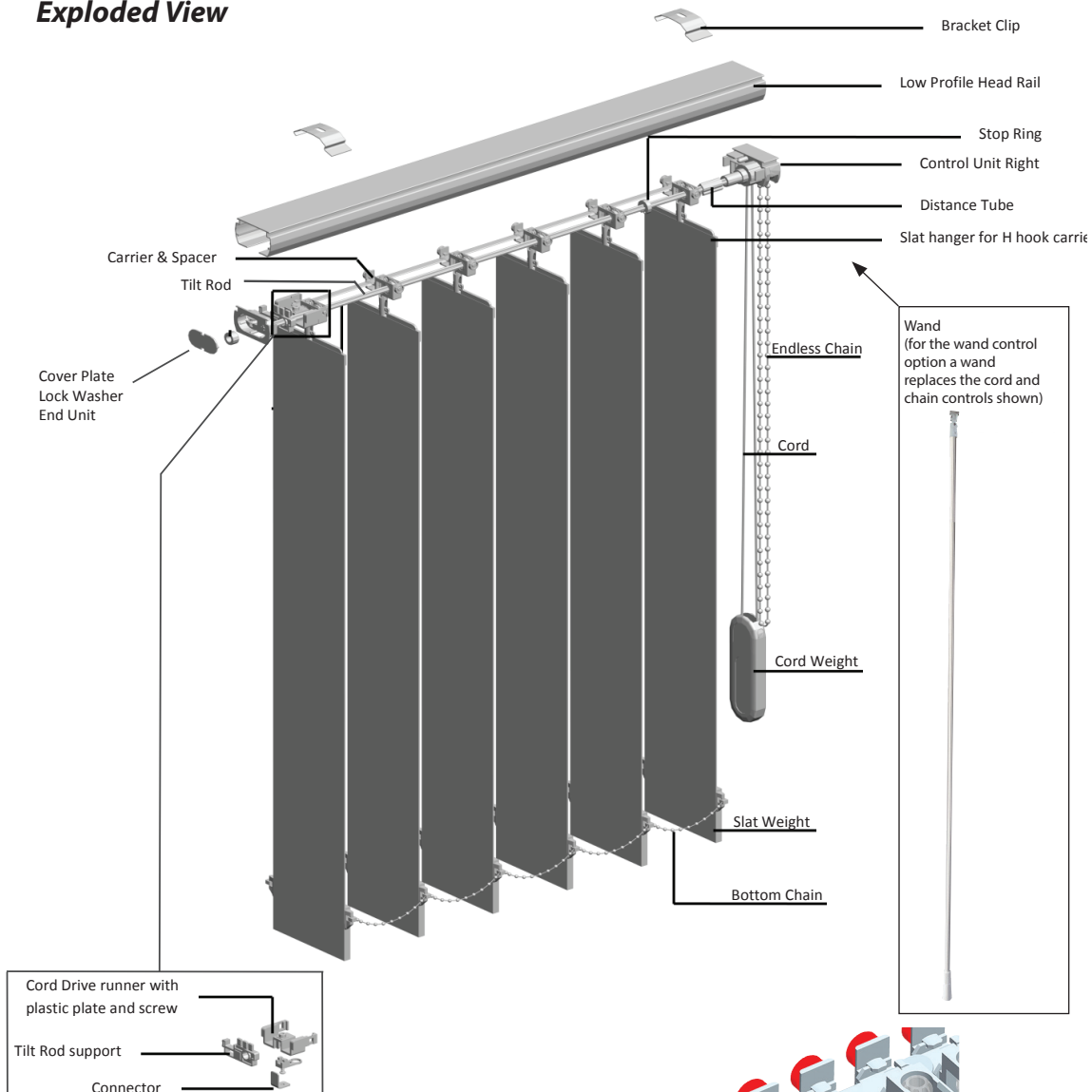
## Stacking Formula

To determine the stacking measurement of a vertical, divide the width of the blind by 78mm (louvre spacing), then multiply by 9mm (width of carrier), then add 55mm (space between last louvre and the wall) e.g. 2500mm width ÷ 78 x 9 + 55 = 343mm.

# Vertical Blinds - Hardware Overview

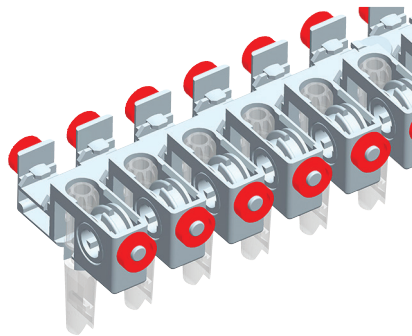


## Exploded View



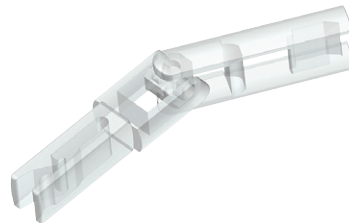
### Carrier & Spacer

- Carrier & Spacer : (POM) Polyoxymethylene
- Type : Low Profile
- Clear H hook with plastic spacer



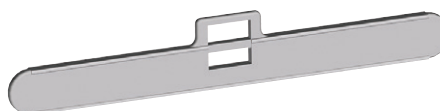
### Trapezium Hook

- Trapezium Hook : PC (Poly Carbonate)
- Type : Short Hook for Carrier
- Colour : Clear



### Slat Hanger

- Slat hanger for H Hook Carrier : (POM) Polyoxymethylene
- Type : Flexible, Double holes
- Size : 82mm to suit 89mm Louvre



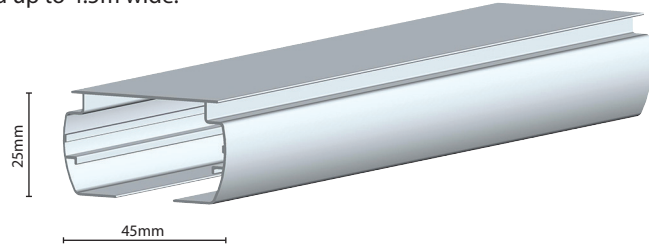
SPECIFICATIONS

Sec. : Vertical  
Date: Oct 2016

## Head Rail

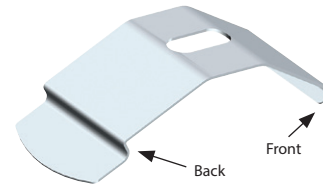
The elegant low profile curved side head rail design measuring just 45mm x 25mm deep gives a compact impression. The extrusion is +1mm of thickness which provides excellent rigidity and strength enabling blinds to be manufactured up to 4.5m wide.

- Head Rail : Aluminium
- Type : Low Profile Curved side
- Dimensions : 25mm x 45mm
- Thickness : 1.0mm
- Head rail colours : Silver, White, Ivory, Bronze, Black
- Louvre Light Gap : 7mm
- Frame Light Gap : 5mm



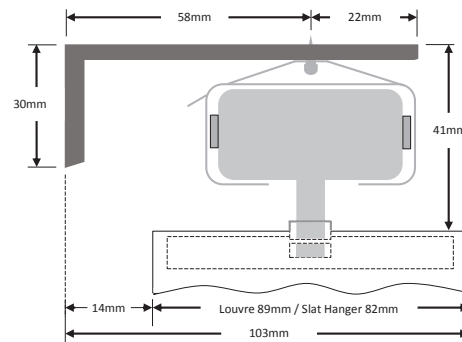
## Fixing Bracket Clip

- Composition : Spring Steel - Nickel Plated
- Type : Snap-in system (front first then back)
- Thickness : 0.4mm



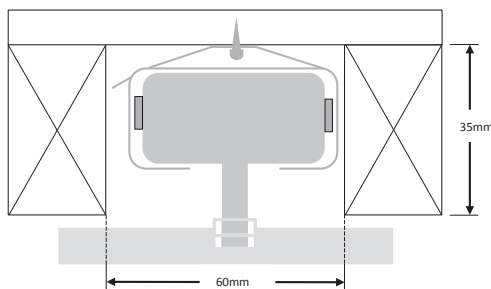
## Extension Bracket

- Composition : Aluminium
- Size : 80mm x 30mm
- Thickness : 4mm
- Colours available : Silver, White, Ivory, Bronze, Black

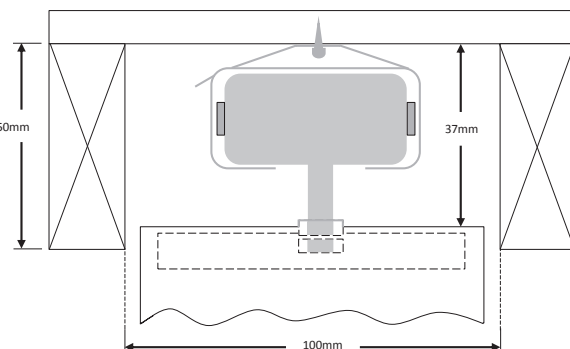


## Recess Dimensions

Head Rail & Fixing Bracket Clip



Head Rail, Fixing Bracket Clip and Louvre



# Vertical Blinds - Hardware Overview



SPECIFICATIONS

## Control Chain

- Endless Ball Chain : Polyoxymethylene (POM)
- Size : 0.5m, 0.75m, 1m, 1.2m, 1.5m, 1.75m, 2m, 2.5m, 3m
- Ball Diameter : 4.5mm
- Ball Pitch : 6mm
- Colours available : White, Grey, Black



## Cord Weight

- Cord Weight : ABS (Acrylonitrile-butadiene-styrene) for the white part  
PC (Poly Carbonate) for the clear part
- Weight : Steel
- Colours available : White, Grey, Black

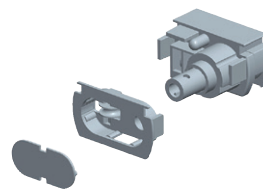
## Cord

- Cord : Polyester (non-stretch)
- Diameter : 2.0mm
- Colours available : White, Grey, Black



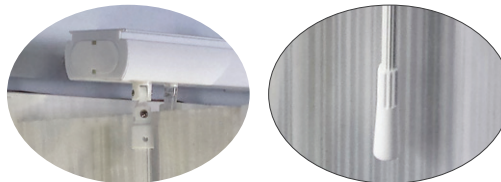
## Control Unit (cord control)

- Control Unit for Low Profile : Polyester (non-stretch)
- Colours available : White, Grey,



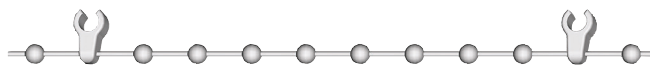
## Wand Control

- Shaft : Powder coated aluminium
- Handle : PVC
- Colours available : White, Grey, Black



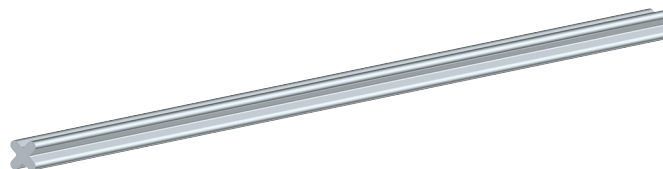
## Bottom Chain

- Bottom Chain : Polyoxymethylene (POM) and Nylon
- Type : "C" clip
- Pitch between two clips : 89mm
- Beads between two clips : 8
- Colour : White



## Four Ribbed Tilt Rod

- Tilt Rod : Aluminium
- Type : Four ribbed
- Diameter : 6mm



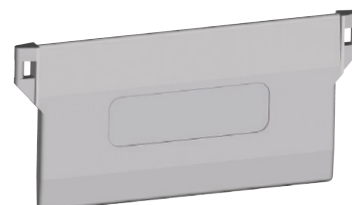
## Cordless Bottom Weight

- Composition : Calcium Carbonate
- Size : 89mm
- Colour : White



## Bottom Weight Option

- With bottom chain
- Composition : Calcium Carbonate
- Size : 89mm
- Colour : White





# Vertical Blinds

# SPECIFICATIONS



Sec. : Vertical  
Date: Oct 2016



# Vertical Blinds - Fabric Range

Blockout - Valencia/Oxford/Firenze  
 Sunscreen - Techno Screen 5000 5%  
 Light Filtering - Filtra

SPECIFICATIONS

◆ **LIGHT-FILTERING OVERVIEW**  
 Filtra light-filtering is a perfect balance between privacy and sunlight. The fabric provides more privacy than screen fabrics but still allows you to enjoy ambient light. Filtra is a plain weave, 100% polyester with acrylic coating and PVC free.

◆ **Light-filtering**

◆ **PVC free**

◆ **Fade resistant**

◆ **SUNSCREEN OVERVIEW**  
 Techno Screen 5000 range is very cost effective and works well in both commercial and domestic situations. Techno Screen 5000 is dimensionally stable and comes in a wide range of colours in 5% openness. Is a fire retardant fabric with very high colour fastness (Grade 7-8) when subjected to sun rays.

◆ **High energy efficiency**

◆ **Oeko-Tex® Standard 100**

◆ **Excellent fire retardancy**

◆ **Colour fastness Grade 7-8**

◆ **5% openness**

◆ **BLOCK-OUT OVERVIEW**  
 Valencia, Oxford and Firenze ranges are Polyester (PVC free) block-out fabrics and are a very cost effective method to treat your windows. Fire retardant fabrics are available on request and all are resistant to mould and fungi, making them ideal installations in areas of high humidity and moisture.

◆ **Block-out**

◆ **PVC free**

◆ **High colour fastness to light**

◆ **Mould and Fungi resistant**



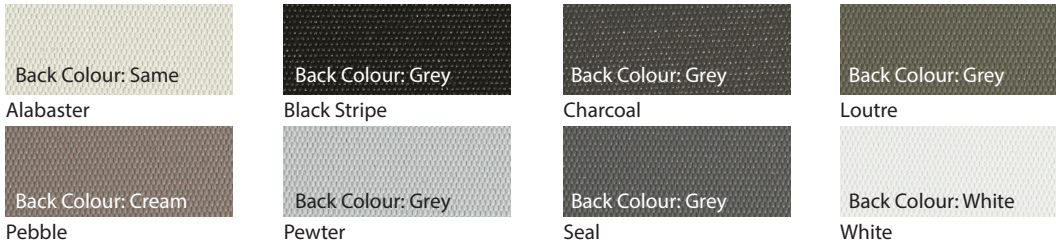
Sec. : Vertical  
 Date : Feb 2016

# Vertical Blinds - Fabric Range

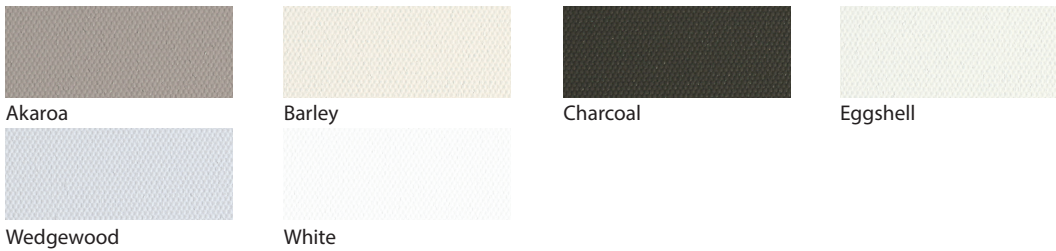
Blockout - Valencia/Oxford/Firenze  
 Sunscreen - Techno Screen 5000 5%  
 Light Filtering - Filtra

SPECIFICATIONS

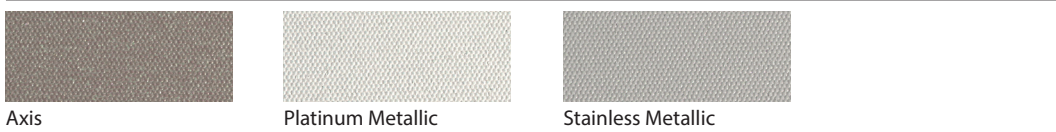
## VALENCIA



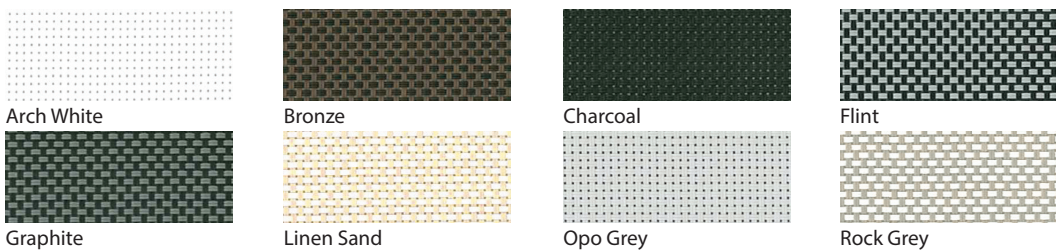
## OXFORD



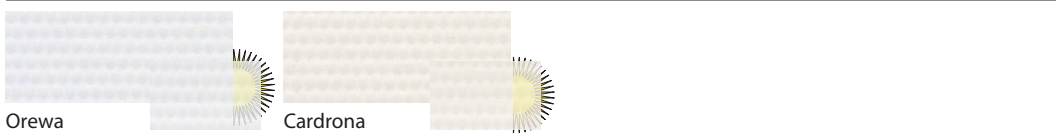
## FIRENZE



## Techno 5000



## LIGHT-FILTERING - FILTRA



## TECHNICAL DATA - Valencia, Oxford, Firenze, Techno 5000, Filtra

Series:	Valencia	Oxford	Firenze	Techno 5000 5%	Filtra
COMPOSITION	100% Polyester	100% Polyester	100% Polyester	30% Polyester, 70% PVC	100% Polyester
WEAVE	Plain weave	Plain weave	Plain weave	Basket Weave	
CONSTRUCTION	Warp 31±1/cm Weft 13±1/cm	Warp 30±1/cm Weft 17±1/cm	Warp 30±1/cm Weft 17±1/cm		
COATING	Acrylic	Acrylic	Acrylic		Acrylic
WEIGHT	480 ±30 gsm	345 ±30 gsm	335 ±30 gsm	380 ± 5%	240 ±10 gsm
THICKNESS	0.73 ±0.06 mm	0.33 ±0.02 mm	0.32 ±0.02 mm	0.53 ± 5%	0.45 ±0.02 mm
COLOUR FASTNESS	Grade 5	Grade 5	Grade 5	ISO 105 B02, Grade 7-8	5 Min
OPENNESS FACTOR (%)				5%	
MESH / IN (INCH)				48 x 48	
TEAR STRENGTH (N)				≥20 x ≥20	
FIRE CLASSIFICATION				NFPA 701-2004 TM#1, California Administrative Code, Title 19, BS 5867 Part 2 Type B	
ANTI-ULTRAVIOLET				95%	
BREAKING STRENGTH (N)				≥1300 x ≥1200	

**PLEASE NOTE: Colours shown are indicative only. Fabric samples are available on request.**

Sec. : Vertical  
 Date : Feb 2016