



Mystique® “a curtain and blind in one”



# SPECIFICATIONS



# SPECIFICATIONS

Sec. : Mystique®  
Date : May 2021

# Mystique® - Overview



The Mystique® is a recent addition to the Window Treatments product range. A hybrid of a curtain and blind, Mystique® offers block out and light filtering in one. The perfect application for French or sliding doors

## Operating Mystique®

Mystique is available with two control options, Manual or Motorised. Both options enable Mystique to be drawn to either side or with a centre opening.

**Motorised:** The motorised option is manufactured using a unique German designed traversing headrail system. This high-quality head rail system is manufactured under license exclusively by Window Treatments NZ Ltd and is available in three track colours, white, anodized and black. Rotation and traversing control is via a remote or through a building management system. Note: It is normal for the head rail system to emit a mechanical sound during traversing and altering the angle of Mystique®. Motorised Mystique can be manufactured up to a width of 5000mm and drop (height) of up to 2800mm. For new builds, Window Treatments can also supply a ceiling recess aluminium profile to fully conceal the headrail within the ceiling cavity.

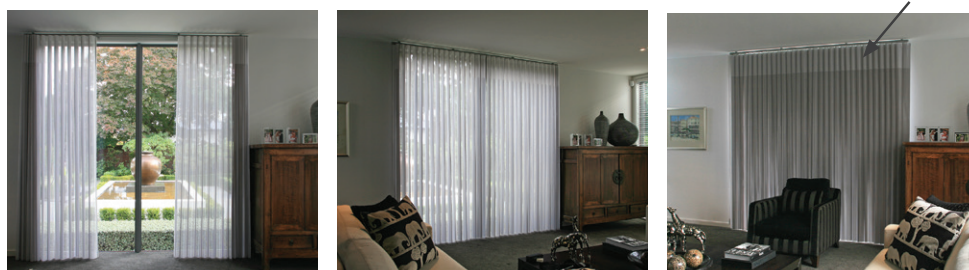
**Manual:** The manual option is manufactured with a premium head rail tracking system from Louvolite United Kingdom. The system enables Mystique to be controlled by a continuous chain loop for rotation and a continuous pull cord for traversing. Note: It is normal for the head rail system to emit a mechanical sound during traversing and rotation of Mystique®. Manual Mystique can be manufactured up to a width of 4000mm and drop (height) of up to 2800mm.



Manual control



Motorised control



# SPECIFICATIONS

Sec. : Mystique®  
Date: May 2021



# Mystique® - Installation Types

## Mystique® Fabric Colours:

Colours: Black, Honey, Sand, Dove, Stone, Tusk, Kinetic

TECHNICAL DATA	Black, Dove, Honey, Sand, Stone	Tusk, Kinetic
COMPOSITION	100% Polyester	100% Polyester
FABRIC THICKNESS	0.37mm & 0.18mm	0.35mm & 0.14mm
FABRIC WEIGHT	204 gsm	251 gsm
LIGHT FASTNESS	<4	<4

## Head Rail and Componentry Options

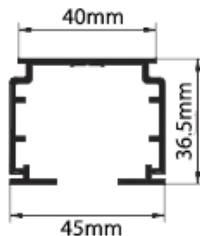
The Mystique® head rail, Control and Idle ends and operating chain are available in three standard colours; White, Black and Anodised/Grey. Head rail custom colours are available on request with a small surcharge.

Motors are available in white, black and grey and cannot be custom coloured. Travellers for motorised are available in grey only. Travellers for manual control are white only.

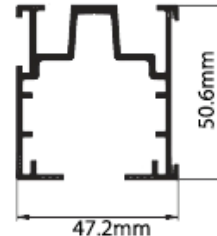
## Head Rail Sizes

There are three different head rail sizes which are selected based on the following factors:

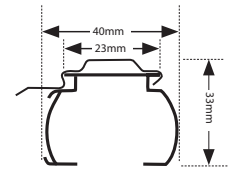
- The fixing position (see below)
- Motorised or manual operation



Low Profile - Motorised for recess Fix



High Profile - Motor for Face Fix



New Profile - for "Manual Control"

## Fixing Position

Mystique® offers five different fixing positions to best suit your application.

### 1. Top Fix

One of our most common fixing position is top fix inside a reveal, recessed or fixed directly to the ceiling.



Manual control

< Manual Operation - Low profile head rail

Motorised Operation - > High profile head rail (screwed through profile into fixing)



### 2. Top Fix with extension brackets

Installations in narrow reveals where clearance may be needed for protruding handles or mullions, we can top fix the head rail with extension brackets. Extension brackets are used allowing Mystique® to clear any objects that may affect its operation.



Manual Operation - Low Profile Head Rail



Front View Motorised version only - High Profile Head Rail



Rear View

Sec. : Mystique®  
Date: May 2021

# Mystique® - Installation Types



### 3. Face Fix

Face fix allows for installation outside of the window frame. Mystique® can either be fixed on or above the reveal with extension brackets used to clear any protruding objects.



Manual Operation - Low Profile Head Rail



Front View  
Motorised version only - High Profile Head Rail



Rear View

### 4. Recess Head Rail Fix

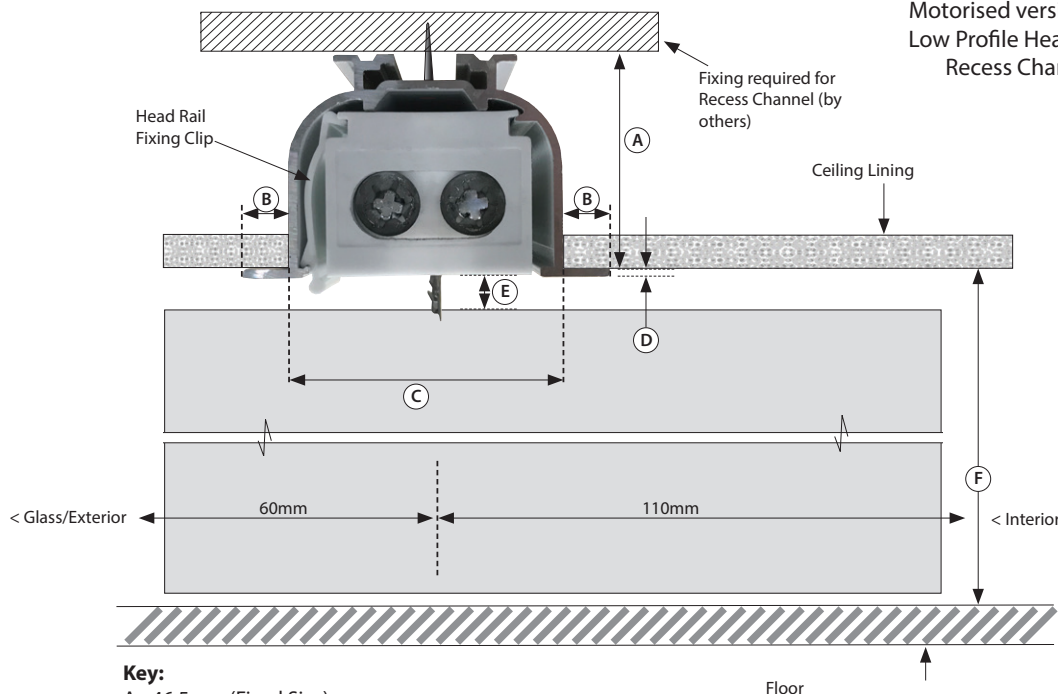
Motorised Mystique® can be recessed into a recess channel for the low profile head rail, designed to fit seamlessly into the ceiling cavity. This option completely conceals the head rail within the recess providing a full uninterrupted drop of fabric from the ceiling to the floor.

The recess channel is only available for low profile motorised versions. The motor is positioned on top of the Mystique® head rail rather than at the back of the head rail. This means that at the motor end of the head rail, extra clearance above the head rail of 52mm(H) x 350mm(L) is required to accommodate the motor.

The recess channel requires a clearance of 110mm from centre of channel to the interior, and 60mm clearance from the centre of the channel to the exterior.



Motorised version only  
Low Profile Head Rail &  
Recess Channel



**Key:**

- A. 46.5mm (Fixed Size)
- B. 9.5mm (Fixed Size)
- C. 60mm (Fixed Size)
- D. 2.3mm (Fixed Size)
- E. 16mm (Fixed Size - Light Gap)
- F. Measurement required from underside of ceiling lining to the floor. Note: Window Treatments will make the necessary deduction/additions for the Head Rail/Recess Channel and floor clearance. Ceiling lining and floor should be checked for parallel.

SPECIFICATIONS

Sec. : Mystique®  
Date : May 2021

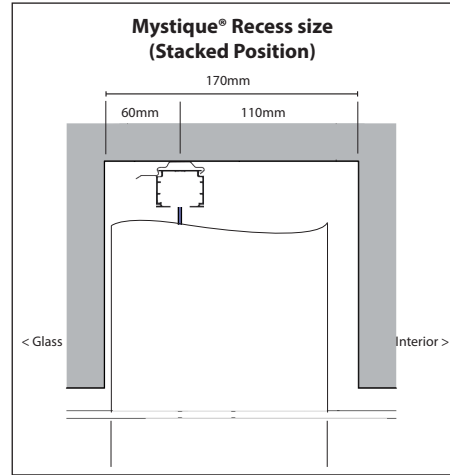


# Mystique® - Installation Types

SPECIFICATIONS

## 5. Recess Head Rail Fix and fabric

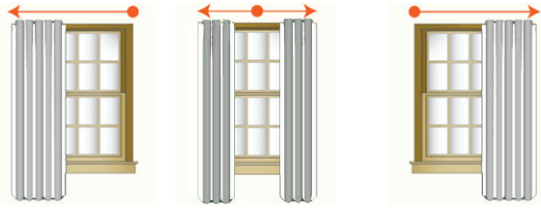
Both the Mystique® head rail and the fabric can be completely recessed into a customised cavity providing the cavity has a minimum depth of 170mm. All head rail options are available for a recess however, if it is motorised and a low profile head rail is selected, there needs to be an extra clearance of 52mm(H) x 350mm (L) (at the motor end) above the head rail to accommodate the motor. Alternately if a high profile head rail is selected then the motor is positioned behind the head rail and therefore no extra space is required.



## Drawing Options

There are two draw options for Mystique®: one-way draw and split draw. One-way draw allows you to choose the direction mystique® is drawn.

This option is ideal for left or right opening sliding doors as it keeps Mystique's® fabric away from thoroughfares. Split draw is a good choice for center opening doors because it keeps Mystique's® fabric to both sides making center opening doors more accessible. Note: If a split draw is selected, there will always be a gap between both sets of fabric when the Mystique is drawn over the opening. The gap can be closed by rotating the angle of Mystique using the rotation chain.



## Stacking width formula

To calculate the width of Mystique's® fabric in the drawn position (stacking width) the formula below can be used:

Divide Width by 5.5 then add 50mm per side of stacking

(e.g. 2000mm one way draw / 5.5 + 50mm = 415mm Stack)

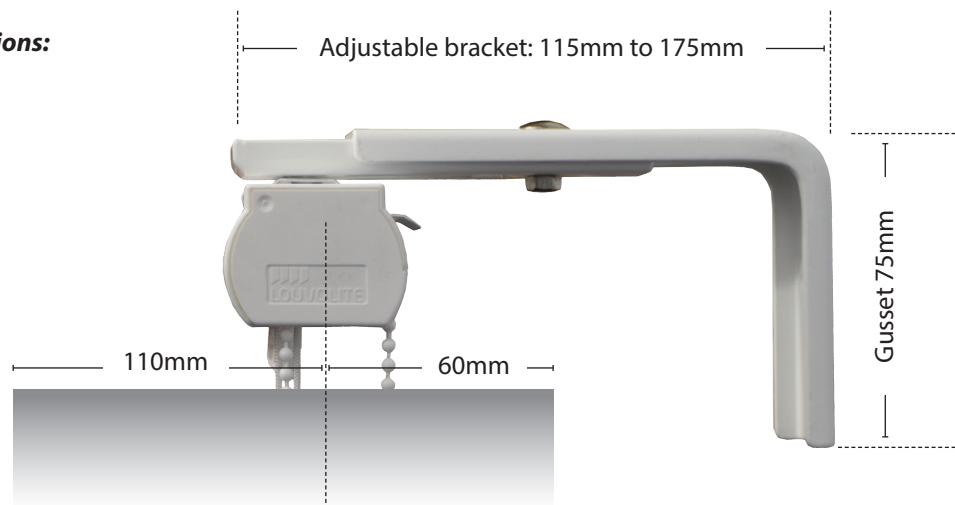
(e.g. 2000mm two way draw / 5.5 + 100mm = 464/2 = 232mm Stack per side)

## Maximum & minimum size guidelines

Mystique's® maximum width is 5000mm (motorised operation) or 4000mm (manual chain control) with a maximum drop of 2800mm. If you require a larger blind, two separate mystique's® can be ordered, each with a one way draw.

Mystique's® minimum width is 400mm, and minimum drop is 400mm.

## Face Fix dimensions:



Sec. : Mystique®  
Date: May 2021